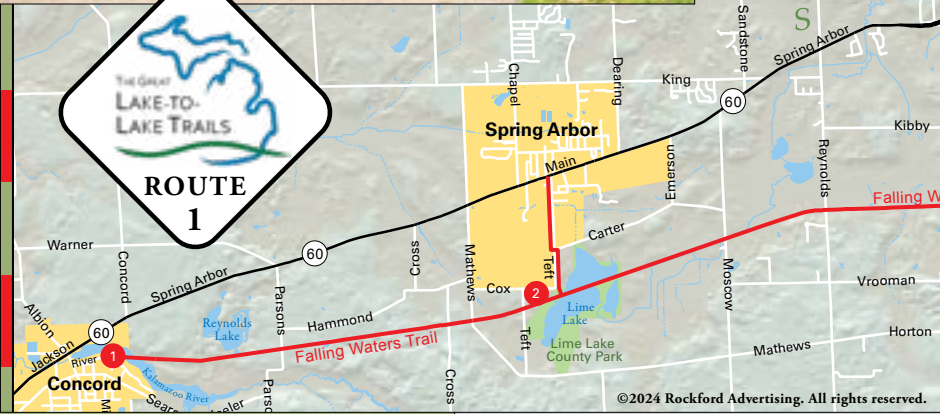
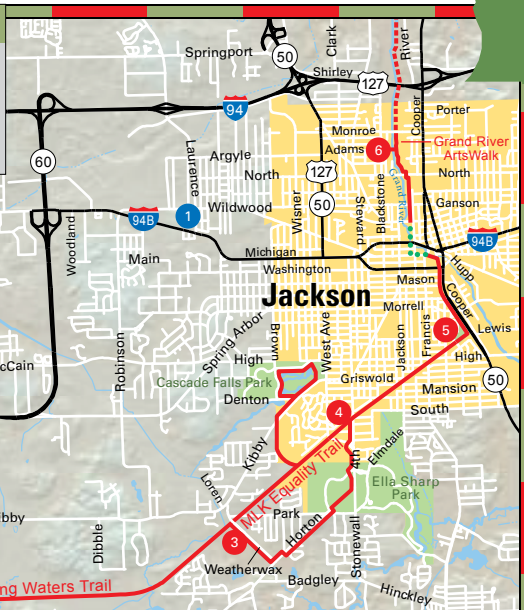


Martin Luther King Equality Trail

Trails Legend

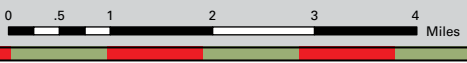
- Paved Trail
- - - Connector Route
- - - Under Development
- Highways
- Roads



The Grand River ArtsWalk passes through the historic site of Michigan's former state prison.

Jackson Area Trails Access

Access Site	Parking	Restrooms	Water
1 Concord Trailhead	Yes	Portable	No
2 Teft Road Staging Area	Yes	Vault	No
3 Weatherwax Trailhead	Yes	Portable	No
4 New Leaf Park	Yes	No	No
5 Howard Woods Park	Yes	Portable	No
6 Lions Park	Yes	Yes	Yes



Falling Waters Trail

The 10.6-mile Falling Waters Trail was built on an abandoned stretch of the former Michigan Central Railroad. The 12-foot-wide asphalt path is one of Michigan's most popular rail-trail destinations.

The trail travels through a geologic region of springs and lakes in Jackson County that form

the headwaters of four major Michigan rivers. Native Americans called this area "The Land of Falling Waters." At the western trailhead in Concord, the trail crosses a bridge over the Kalamazoo River where you can view a great expanse of marshy wetlands. One of the highlights of the trail is a causeway that runs through the middle of Lime Lake. This is a great place to stop, relax, view wildlife and enjoy the natural beauty of this turquoise blue lake. On the west side of Lime Lake, a new 1-mile paved connector trail takes you to Spring Arbor. Along the way, the trail passes through a lush landscape of wetlands, shady woodlands and fields of corn and soybeans.

Martin Luther King Equality Trail

At Weatherwax Road, the trail changes its name to the Martin Luther King Equality Trail. This 3.4-mile section of trail travels through quiet suburban neighborhoods, then turns north and follows Cooper Street to downtown Jackson and the Grand River ArtsWalk. Along the way, you can connect with a series of boardwalks and paved trails that encircle a wetlands complex at Cascade Falls Park, or another 2.5-mile section of trail through Ella Sharp Park.

Grand River ArtsWalk

The Grand River ArtsWalk is a 1.5-mile paved trail that travels through Jackson's growing arts and entertainment district. The trail begins where Cooper Street meets the Grand River. From there, continue west on Michigan Avenue, then go north on Mechanic Street through the Armory Art Village. Follow the paved path north through the former state prison and along the banks of the Grand River. Jackson County Parks has begun construction on an extension of the trail, through Blackman Township, that will connect with the Mike Levine Lakelands Trail State Park.



Witness the fall colors on the Falling Waters Trail.

Photo by Susan Bennet